

Report to Nash Mills Parish Council

All reports to be circulated in advance of NMPC Meeting.

Working Group Name	The Denes
Meeting Held (Date)	19 Jan 2022 (update on actions only)
Present at Meeting	Nicola Cobb, Alan Briggs, Michele Berkeley, Steve Roberts, Emily Tout, Lisa Bayley, Mandy Lester
Apologies	Jan Maddern,
Agenda Items for Resolution/Decisions Needed <i>Please list each point requiring a decision separately for inclusion on the agenda.</i> <i>Please note items not included on the agenda cannot be approved.</i>	To consider options for the following items: <ul style="list-style-type: none">▪ Project into two spaces? Yes or no▪ Bench style – Jubilee or Dacorum – agree costs and installation▪ Plaque – whole garden, bench only or both?

UPDATE ON 'IN PROGRESS' ITEMS

The following items related to this working group have already been actioned and are in progress:

- **Cycle racks and installation** – style agreed and clerk in contact for installation options
- **Noticeboard** – style and size agreed - separate agenda item to agree vendor
- **Post box** – picked up by our borough councillor – Jan has discussed this with the appropriate party at Royal Mail who will look into options. It is now left with them to determine whether a post box can be added to the Denes. No further action for the parish council.
- **Design illustrations** - Our parish clerk initially asked the Dacorum Parks & Open Spaces Officer to provide two drawings, to include wildflower and formal planting and different proposed bench options. However, given his busy schedule, it has been agreed that council will first choose preferences during February and March meetings, then share with him for drawing completion before 3rd June. Planting, etc. should then be able to commence in Autumn 2022.

OUTSTANDING ITEMS FOR CONSIDERATION

During our January meeting, the working group discussed options to keep things moving and after discussion with clerk (based on priority and availability of time on the agenda) it is proposed that the following agenda items are split between February and future meetings:

PRIORITY ITEMS FOR FEBRUARY – detailed information from page 2 onwards

- **Jubilee garden space** - Do council agree to split the Platinum Jubilee Garden into two separate areas (central space and the area where new tree will be planted) to prioritise Jubilee items?
- **New bench** (location depends on decision above) – council to consider the choice of a Jubilee bench or a standard Dacorum bench? Bench and installation cost information below.
- **Jubilee plaque** – there is already a generic plaque for the Queen's Green Canopy. Do council want to consider a plaque for the garden overall and/or something for the bench?

FUTURE CONSIDERATIONS – subject to priority and agenda space

- **Additional benches** – Style options
- **Memorial plaques for benches** – Yes/No and, if yes, names for memorial benches
- **Memorial policy** – can we adopt DBC memorial policy as we don't own the land?
- **Planting** – formal, wildflower or combination and possible sponsorship / school involvement
- **Bin** – options, how many, replace existing bins?
- **Red telephone box** – yes / no and, if yes, options for use
- **Bug hotel or similar** – yes / no, location
- **Earmarked reserves** – use of funds / requests for change to categorisation if needed?
- **Drug link** – are there volunteering opportunities for drug link programme?
- **School art projects** – ideas / locations for school art work to be publicly displayed
- **Double height kerb** – options to protect and manage parking
- **Street signs** – request replacements

BACKGROUND INFORMATION FOR FEBURARY AGENDA

PLATINUM JUBILEE GARDEN – LOCATION OPTIONS

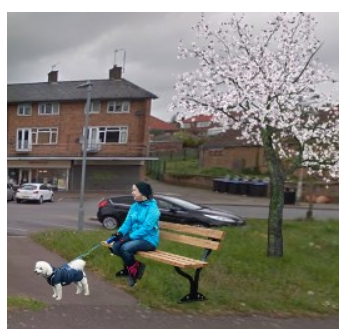
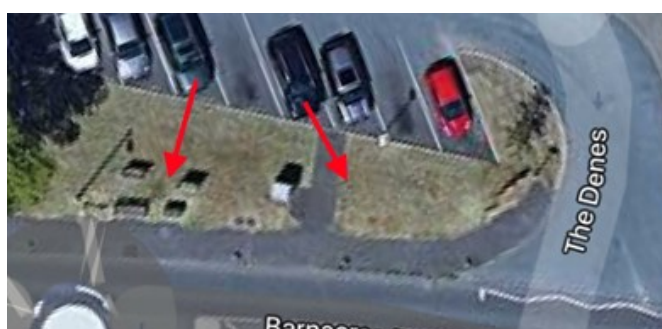
Do council agree to split the Platinum Jubilee Garden into two separate areas (central space and the area– where new tree will be planted) to prioritise Jubilee items?

OPTION 1 – Seating in central space only

Other than a new tree, all other items are placed in the central space (where the existing Golden Jubilee bench is currently located).

OPTION 2 – Seating split across two locations

Garden is split across two areas – central space and new tree space. A new bench is installed near to the tree (exact location to be determined by Dacorum installation team once NMPC preferences are shared but example shown below). This would allow us the opportunity to progress the project without the full design for the central area.



NEW BENCH

New bench (either in area 1 or area 2 depending on decision above) – council to consider the choice of a Jubilee bench or a standard Dacorum bench? Bench and installation cost information below.

Our first new bench will either be added to the area near the Jubilee tree, or replace the existing bench. Additional benches will be discussed in future meetings.

OPTION 1 – Installation cost only - Standard Dacorum bench

This option would be provided free of charge by Dacorum Parks & Open Spaces team as they have one available. No waiting time for bench but we'd need to work with installer to arrange suitable installation time before the Jubilee.

OPTION 2 - £620 plus installation - Traditional style bench with Jubilee engraving

This option would be a similar style replacement for the Golden Jubilee bench. Benches are made to order so, if ordered soon after 14th February, should be available end April or early May. Earmarked reserves of £2,500 available for replacement bench.

<https://www.corido.co.uk/balmoral-6ft-queen-s-platinum-jubilee-commemorative-bench.html>



Installation costs - £340 plus VAT

The Parks & Open Spaces Officer can arrange the installation of either bench by the approved supplier. They already have an agreement to install benches on Highways land. Nash Mills Parish Council would pay the installation cost of £340 plus VAT. This would include provision of a large base to include wear point for bench 1800mm x 900mm and fix bench to base.

Additional information

The images below show existing bench and wording “Presented by Dacorum Borough Council to the Parish of Nash Mills” a ready engraved Platinum Jubilee bench of a similar style or a Jubilee plaque that could be added to a Dacorum bench (example below from Silver Jubilee).



PLAQUE (Tree, bench, garden)

Jubilee plaque – there is already a generic plaque for the Queen’s Green Canopy (QGC) which we can use for the tree. Do council want to consider a plaque for the garden overall and/or something for the bench?

Option 1 – Personalised garden plaque only

One plaque to cover the entire Platinum Jubilee garden. This plaque could mention that the garden was named to mark the occasion of the Queen’s platinum year. E.g. *“The Denes Platinum Jubilee Garden - This garden has been created to commemorate the Platinum Jubilee of Her Majesty Queen Elizabeth II – June 2022”*.

Option 2 - Personalised Bench plaque only

Personalised plaques for the garden and bench. This might be an option if a Dacorum bench is selected. For example, *“This bench marks the occasion of Her Majesty Queen Elizabeth II’s Platinum Jubilee 2022”*

Option 3 - Personalised garden plaque plus bench plaque

If opting for the Dacorum style bench which would be ready for the Jubilee, this could be marked with a plaque this year with a larger plaque to follow for the entire garden to mark the completion within the Jubilee year.

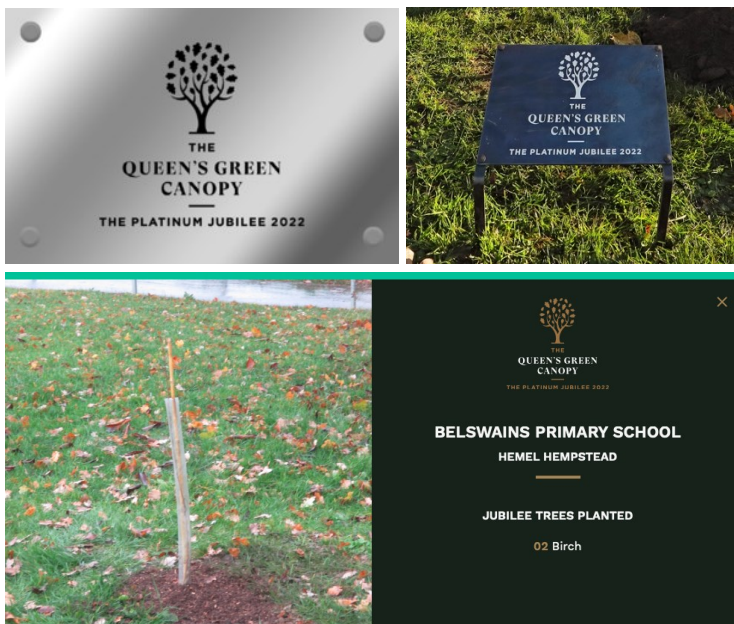
Additional information

Details for use of Platinum Jubilee emblem if we want to consider this for plaque design: <https://www.royal.uk/queens-platinum-jubilee-emblem>

Physical QGC plaques: QGC plaques must be freestanding. According to the website, the addition of personal messages, or logos to feature alongside a QGC plaque, is not permitted.

Cost of physical plaques available from vendors on this link: <https://queensgreencanopy.org/commemorative-plaques/>

Virtual QGC plaques: For our tree, we can add a pin to the QGC website to show the location of our tree. Once a pin is added, we would receive a digital plaque which can be shared online. Below left is an example of a location added to the QGC website.



BACKGROUND INFORMATION FOR FUTURE AGENDA ITEMS (info only)

The following items (additional benches, bins, planting, etc.) were discussed at the working group meeting on 19th January. However, these will not be considered on the February agenda. They are provided here as a report of the meeting and for illustration purposes only.

Use of Earmarked Reserves, including Community Infrastructure Levy

Earmarked reserves, some of which might be available for the Denes:

- Groundworks grant (noticeboard) - £1,600
- Bench and plaque - £2,500
- Projects, Denes, Defib - £7,086.53
- Community Support - £9,700
- CIL (Conditional Spend)* - £20,642

Benches (central space)

Two options presented by Parks and Open Spaces officer

- Standard Dacorum bench <https://wybone.co.uk/product/dacorum-bench/>
- Curved bench <https://www.cyan-teak-furniture.com/henley-semi-circle-bench-curved-teak-bench>

Jubilee bench, if not selected in February, may be a future option: <https://www.corido.co.uk/balmoral-6ft-queen-s-platinum-jubilee-commemorative-bench.html>

Suggestions shared by Cllr Briggs

- Combined seating and planter (exact style to be determined if selected) – link to large example from Hemel Hempstead <https://www.externalworksindex.co.uk/entry/137214/Street-Design/Planters-with-integrated-benches-Hemel-Hempstead/>



Other examples of seating / planter combinations: <https://www.street-design.com/48pseating.html>

Planting options

- Formal planting – planters (style wood / concrete) – could consider concrete for non-parking
- Formal planting – bed
- Wildflower turf - <https://www.wildflowerturf.co.uk/products/wildflower-turf/> - if yes, where
- Combination - (wildflower border to carpark, plus formal planters)

Note that there may be a grant available towards rewilding and we can look at sponsorship options for planters.



Example layout / design options

Examples to be refined once further decisions are made in March.

